

# SSDM2024 Template

## Instructions for Preparing Camera-Ready Summaries for SSDM2024

Yasuyuki Miyamoto<sup>1,\*</sup>, Meishoku Masahara<sup>2</sup> and Nobuhiko Nishiyama<sup>1</sup>

<sup>1</sup> Tokyo Tech

2-12-1 Ookayama, Meguro-ku, Tokyo 152-8550, Japan

<sup>2</sup> AIST

West 7, 16-1 Onogawa, Tuskuba, Ibaraki 305-8569, Japan

\*Phone: +81-3-6891-9306 \*E-mail: secretariat@ssdm.jp

### Abstract

**A brief abstract should be included as the first part of the paper. It plays a key role in instigating the reader's interest. The abstract text should be in bold font.**

### 1. Introduction

This leaf presents instructions for preparing camera-ready abstracts to be submitted to the 2024 International Conference on Solid State Devices and Materials (SSDM2024). The set of instructions is given in the style and format to be used by the authors. Papers to be presented at the Conference will be selected by each Program Subcommittee on the basis of submitted summaries. The accepted papers will be published in the conference proceedings. All the authors of invited papers, regular papers and late news papers are expected to carefully follow the instructions.

A two-page camera-ready paper should be submitted via the conference web site: <https://www.ssdm.jp>. **Please note that submissions by post will not be accepted.**

### 2. General Instructions

#### Contents

Summaries should contain a concise description of the objectives of the study, method of approach, significant results and conclusions.

#### Page Format

Submitted abstracts should be camera-ready and in 2 pages. Use A4 size paper. Typing area is 178mm×241mm (7"×9.5"). Both text and figures must fit inside this area as indicated by the angles shown at the corners on this page. For A4 size paper, set the top margin to 30mm (1.18"), the bottom margin to 25mm (1"), the left margin to 17mm (0.68") and the right margin to 16mm (0.64"). The column width is 86mm (3.4") with a 5mm (0.2") separation between the two columns.

Text must be typed or printed clearly in English. At the center top of the first page, the title of the paper, author name(s), affiliation(s), address(es), and contact author's phone number, and e-mail address should be given. Use capital letters for the initial letter of each word except articles, prepositions and conjunctions. Place a blank line between the title and author name(s), and between the address(es) and the main text.

The main text should be typed single-spaced in the two columns. The sections should be numbered beginning with "1. Introduction". Acknowledgements and References should not

be numbered. Place a blank line between the sections. Sub-section headings, if any, should not be numbered. Justify the column at both the right and the left. Don't forget to check spelling.

#### Figures and Tables

An abstract may be furnished with Figures and Tables. Large figures and tables may span both columns. Photographs should be high contrast black and white originals. Figure captions should be placed below the figures; table captions above the tables. Arabic numerals should be used for figures like Fig. 1, and Roman numerals for tables like Table I. Place a blank line between the text and the tables or figures.

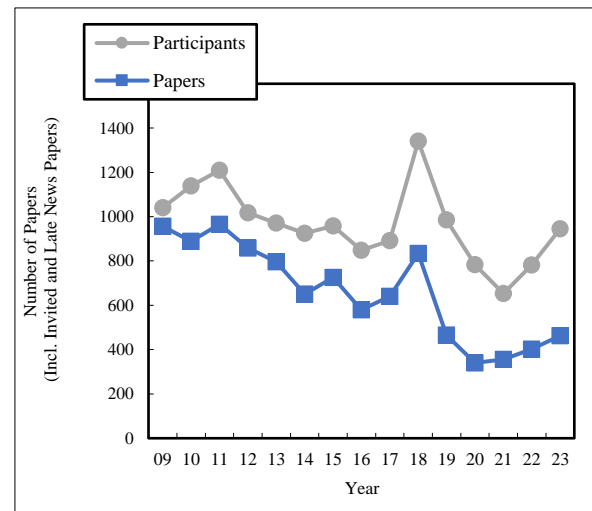


Fig. 1 Number of papers presented at past SSDMs. This is an example of a Figure.

Table I Desirable Fonts

Font size	Bold/Italic	Text
10pt		Affiliation(s), Main text
10pt	Bold	Headings (e.g., 1. Introduction)
12pt		Author name(s)
14pt	Bold	Title
10pt	Italic	Subheadings (e.g., Page Format)
9pt		References, Acknowledgements, Tables, Table captions, Figure captions
8pt		Footnotes, Sub-and superscripts

### Equations

Equations, if any, should appear on a separate line from the text with a blank space above and below. The equation number should appear in parentheses flush with the right margin, as shown below for eq. (1). Punctuate equations with commas or periods when they appear as a part of a sentence like this,

$$\frac{dn}{dt} = G - \frac{n}{\tau} \quad (1)$$

### Fonts

Use proportional serif fonts such as Times or Times New Roman. Font styles and sizes as specified in Table I are desirable. To avoid unexpected problems in the reviewing process, fonts for double-byte characters such as Japanese, Chinese, Korean etc. fonts cannot be used for both figures and texts.

### Color

Because the Extended Abstracts will be published electronically on the conference website, we recommend using colored images.

### References

List and number all the references, if any, at the end of the summary. The reference style in accordance with the one found in the Japanese Journal of Applied Physics is recommended. When referring to them in the text, the reference number should be designated by square brackets like this [1].

### 3. Conclusions

A typical example of the page style and format for the camera-ready summaries for SSDM2024 has been given.

### Acknowledgements

We would like to express sincere thanks to all the contributors to the Conference for their cooperation in the Conference program.

### References

- [1] Y. Miyamoto, R. Nakagawa, I. Kashima, M. Ishida, K. Furuya, Ext. Abstr. Solid State Devices and Materials, 2005, p. 226  
 [2] M. Masahara, Y.-X. Liu, K. Sakamoto, K. Endo, T. Sekigawa,

T. Matsukawa, E. Suzuki, Ext. Abstr. Solid State Devices and Materials, 2004, p. 766

- [3] Nobuhiko Nishiyama, Akimasa Mizutani, Nobuaki Hatori, Fumio Koyama and Kenichi Iga, Jpn. J. Appl. Phys. 37 L640 (1998)

### Appendix

Secretariat of SSDM2024

Kinki Nippon Tourist Co., Ltd. Corporate 3rd Office

E-mail: secretariat@ssdm.jp

URL: <https://www.ssdm.jp>